

Athletic & Recreation Fields Facility Program Plan October 2017

Project Background & Overview

Regional Science Education Center construction to begin spring of 2018 –
on the site of the current football practice field

Preliminary Facility Statement approved in May 2017

Architect selected in July 2017

Proposed project site – fields currently used by NSU soccer east of Jerde Hall

Proposed timeline:

Final design – October 31, 2017 for approval by building committee in
early November and Board of Regents in December

Legislative approval – 2018 session

Construction begins – early spring 2018

Fields ready for use – August 1, 2018

Synthetic Turf Fields



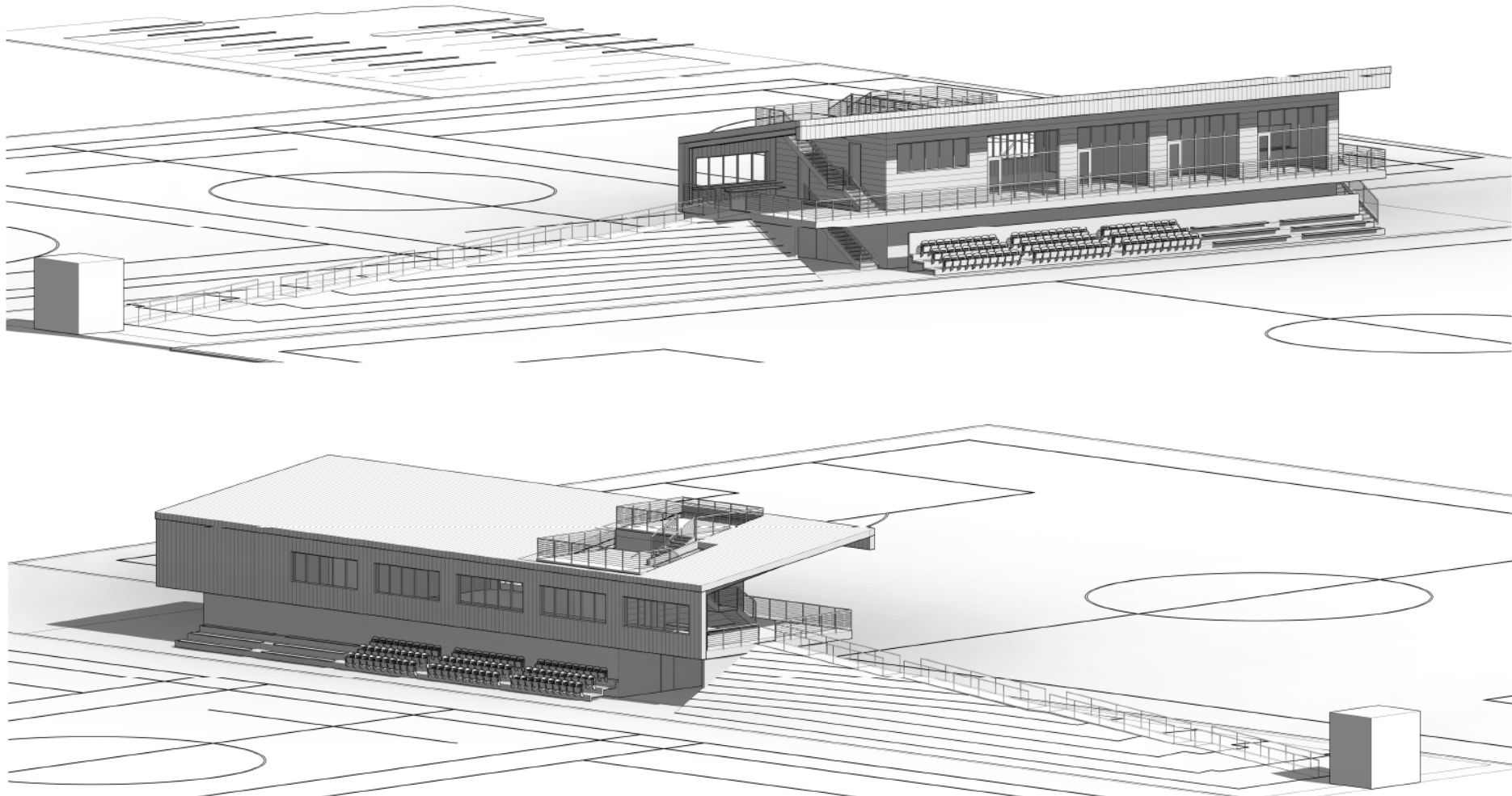
- Priorities: field construction, safety, durability
- Football practice field
- Soccer practice & competition
- Intramurals & HPE classes
- Future women's lacrosse
- 2 inch Dual Fiber synthetic turf
- Slit-film turf in drill areas
- 1 inch thick shock pad throughout
- Lighting appropriate for evening activities
- Fence surrounding entire complex
- Padding system in end zones
- Netting to keep balls inside of fields
- Alternate for parking
- Small restroom between soccer field & tennis courts





Two Story Pavilion

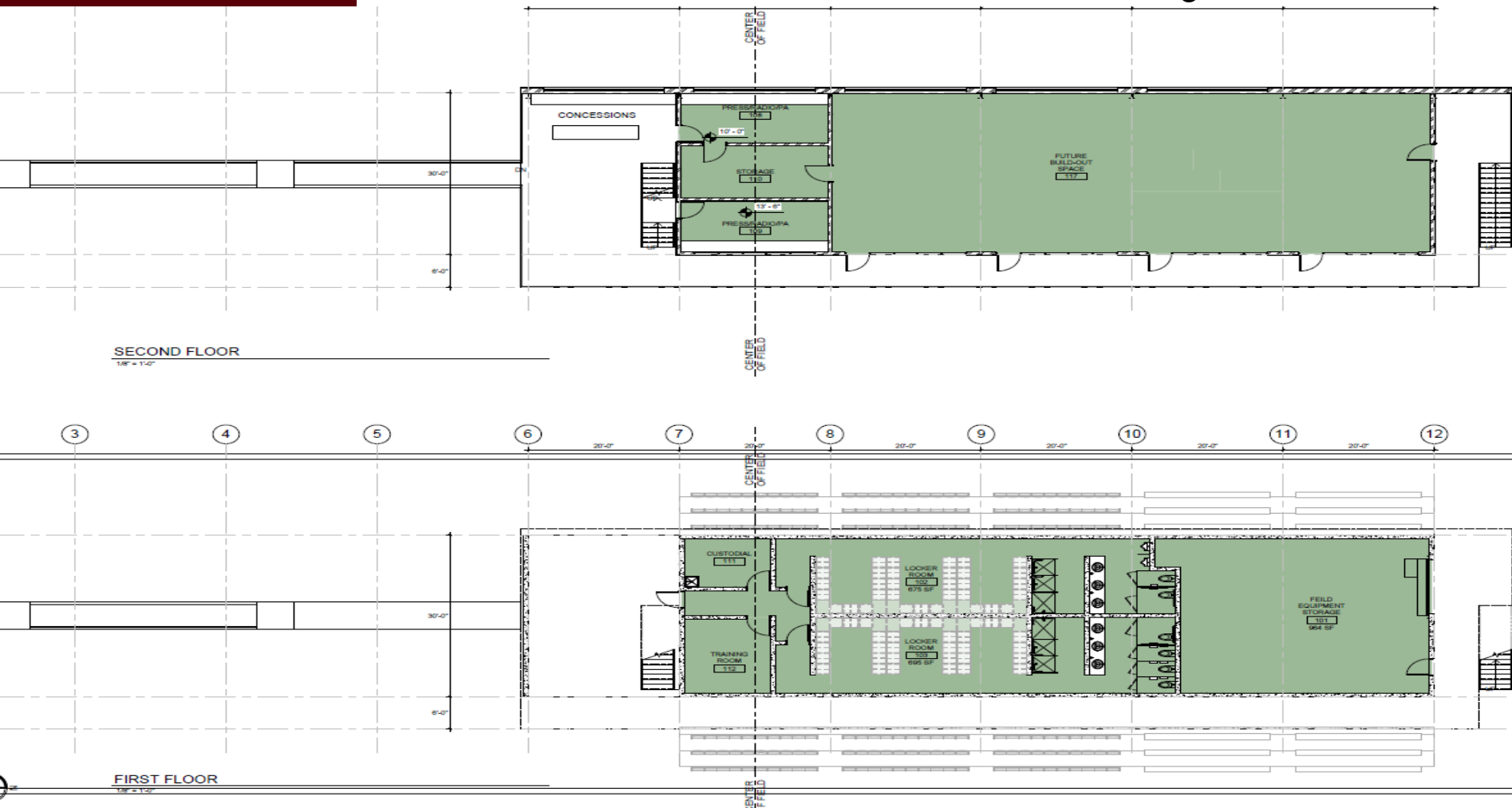
- Surrounded by natural grass
- Berm on south side of the building
 - Provides buffer between fields
 - Provides spectator seating
- Bleach seating on both sides
- Platform on the roof for filming





Pavilion Floor Plan

- Approximately 6,000 sq. ft.
- Lower level
 - Two locker rooms
 - Equipment storage
 - Training room
- Upper level
 - Media space
 - Concessions
 - Restrooms
 - Offices
 - Meeting room





Project Cost

Estimated project cost is \$5,000,000:

Project Construction Costs	\$ 3,655,710.00
Lighting	500,000.00
Fencing, landscaping, sidewalks	300,000.00
Professional fees	325,000.00
Contingency	219,290.00
Estimated Project Cost	<u>\$ 5,000,000.00</u>

Funding Source

Funding will be provided through \$5,000,000 in private funds.

Operating Expenses and Impact to Campus Maintenance and Repair

Operating costs for the new facility will be funded through the university's utility allocation and existing operating budget. Anticipated annual operating costs are approximately \$10,000 including an additional \$5,000 for utilities.

Maintenance and repair costs for the facility will be funded through the university's annual M&R allocation.

Questions?