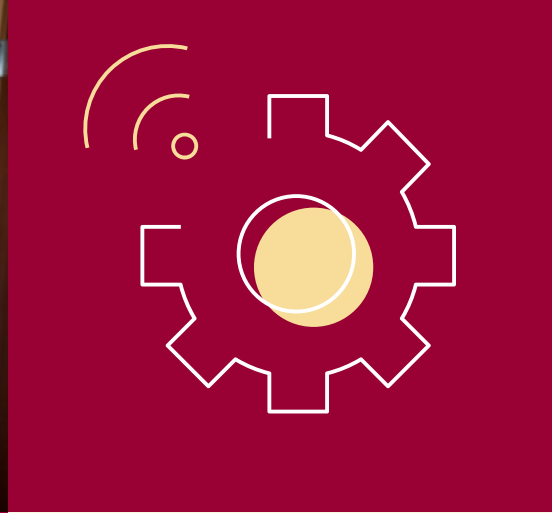


Northern State University Research Plan 2030





INSTITUTION



VISION

Deliver transformational educational experiences and increase and deepen collaborative partnerships to serve the public good

MISSION

Provide diverse academic, civic, social, and cultural opportunities that prepare students through the liberal arts, professional education, and E-learning for their future endeavors, while also enriching the local and regional community

RESEARCH



VISION

Be a regionally recognized institution where students and faculty work together with industry and community partners to address local challenges with foundational innovation and problem-solving skills

MISSION

Provide students with interdisciplinary research and scholarly experiences that offer valuable opportunities to explore careers and open doors to new pathways



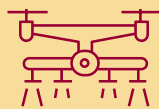
High-Priority Research Areas

1



Health Care

2



Agribusiness

3



Technology

4



Environmental Science

5



Education

Business and Health Innovation Center

Northern State University's Business and Health Innovation Center, opening in Spring 2026, will house the School of Business, the Nursing Program, and the Innovation and Startup Center.



Research and Technology Transfer Goals, 2030

- 1 Connect with industry and community partners on scholarly activities
- 2 Create a cross-disciplinary “research” advisory council to guide scholarly activities on-campus and outside of campus
- 3 Increase basic and applied research
- 4 Increase number of research grants (submit two collaborative proposals with an interdisciplinary focus by 2030)
- 5 Develop cutting-edge research agendas that address high-priority areas
- 6 Incorporate emerging technologies into research and curriculum
- 7 Increase students’ access to scholarly activities and experiential learning opportunities

Research Activity

Table 4. Northern State University Total Grant Proposals, Awards, and R&D Expenditures, FY2019–FY2024

Year	Proposal Count	Proposal Value (\$M)	Award Count	Award Value (\$M)	Expenditures (\$M)
FY2019	12	\$1.04	9	\$0.20	\$0.23
FY2020	12	\$0.35	5	\$0.72	\$0.24
FY2021	13	\$5.04	6	\$1.91	\$0.20
FY2022	17	\$4.14	7	\$0.22	\$0.31
FY2023	7	\$2.71	7	\$4.86	\$0.28
FY2024	8	\$5.96	8	\$1.45	\$3.22

Source: RTI analysis of Northern State University Award Database and NSF Higher Education R&D Survey

