

Owner/ Architect/ Contractor Meeting

NSU Regional Sports Complex

July 14, 2020

OAC Meeting #10

1. Safety

- a. PPE when accessing the site (available in trailer)

2. Schedule

- a. Review 6 Week Look Ahead Schedule - Attached
- b. Milestones:
 - i. **FOOTBALL;**
 - ii. Structural Steel Erection 1-2 Floor column line F1/FA starting point (North side) – 50% Complete
 - iii. Temporary Electrical Transformer – Scheduled to be complete 7/17
 - iv. **BARNETT;**
 - v. Barnett Concrete Footings – Complete
 - vi. 1st Floor Structural Steel – 75% Complete
 - vii. 2nd Floor Structural Steel – Scheduled to start on 7/13
 - viii. Masonry East Elevator Shaft – Complete
- c. New items

3. Updated Drawings & Changes

- a. RFP's distributed by Design Team
 - i. RFP #15 – Premium Exterior Paint for Football Stadium – Select Painting is pricing.
 - ii. RFP #16 – Underground Plumbing at Softball Complex – Subcontractors pricing
 - iii. RFP #17 – Electric Water Coolers – Subcontractors pricing
 - iv. RFP # - Revise additional Drawings for Rebid – Coop is updating
 - v. RFP #18 Additional lockers – Confirm with Custom on Underslab ductwork time frame
 - vi. Forthcoming - RFP #3/ PCO #10 - Scoreboard Redesign – Finalize design – Details to be forwarded to MGC in 4 (6.16.20) – Kody and Steve distributed this 6/23/20 for updated pricing to confirm the current design. McCownGordon/ Quest to reprice. Work needs to occur first of August time frame. Need to get on the schedule end of July with Drillers.
 - vii.
- b. New items

4. RFI's or Information Needed

Owner/ Architect/ Contractor Meeting

NSU Regional Sports Complex

- a. No open items

5. Submittals

- a. See attached open log
Priority Submittals;
Josh to sign off on the Football Field Turf details and paint graphics. – This meeting was scheduled for 7.13.20
Josh might follow up with Daktronics to run down the anchor bolts for the footings
Fencing – Might review one more time to clear up the submittals.

6. Owner Items

- a. FFE Matrix (Owner Supplied Equipment) – Meeting finalized – Kody is reviewing the drawings to be distributed.
 - i. Add major equipment to schedule for tracking and long lead items – David/ Nate. Example of items to review in meeting;
 - 1. Kitchen equipment cut sheets to review
 - 2. Score board layouts – Waiting on Shop drawings
 - 3. Locker shop drawings for under slab ductwork terminations & power for lighting locations and power requirements
 - ii. 4-6' beam painted white for NSU. This needs to be completed end of July.
 - iii. Weather days – Review the wind requirement for Steel Erection
- b. New Items

7. Design Items

- a. City Requirements – Nothing yet
- b. New Items

8. Contractor Items

- a. New Items
- b.

9. Financials

- a. Pending RFP's turned in for Review;
 - i. COR #08 – ALT 4.1C Musco Light Pole Base Sleeves – Forwarded to Brittany to finalize for next OCO's
- b. RFP #11/ PCO # – Guardrail Material Change to Aluminum in lieu of Steel – Pricing in for review

Owner/ Architect/ Contractor Meeting

NSU Regional Sports Complex

- c. PCO # Temp power – Finalized for temp power credit. Pricing in for review
- d. Alternates – Pricing no longer held. Pricing will need to be validated once direction is received from NSU
- e. Review of Alt 2.3 Metal Panels at Party Decks
- f. Pay App #4 Status – NSU forward ACH. MGC/Quest is distributing Subcontractor payments
- g. Pay App #5 Status – Coop sent Pay App #5 to OSE/ NSU for approval

10. Action Items

- a. New Items

11. Meetings

- a. Biweekly OAC meetings every 2 weeks – **Next Meeting 7/28/2020 @ 11:00/**

ID	Task Name	Duration	Start	Finish	M	M	Half 2, 2020	S	N	Half 1, 2021	M	M	Half 2, 2021	S
0	NSU Regional Sports Complex	716 days?	Tue 1/2/18	Fri 10/8/21			J			J			J	S
24	Design	740 days?	Fri 4/13/18	Tue 3/16/21										
62	Design Changes	525 days?	Tue 2/19/19	Tue 3/16/21										
206	RFP #3 - Softball and Scoreboard Foundation	103 days	Tue 4/21/20	Tue 9/15/20										
213	Design of RFP #3	59 days	Tue 4/21/20	Tue 7/14/20										
212	Issuance of RFP #3	2 days	Wed 7/15/20	Thu 7/16/20										
211	Pricing of RFP #3	5 days	Fri 7/17/20	Thu 7/23/20										
210	Approval of RFP #3	2 days	Fri 7/24/20	Mon 7/27/20										
209	New Contract for Scoreboard Foundation Install	10 days	Tue 7/28/20	Tue 8/11/20										
208	Shop Drawings for Scoreboard from Trade Partner	10 days	Thu 8/13/20	Thu 8/27/20										
96	RFP #11 - Guardrail Material Change	43 days	Mon 5/18/20	Fri 7/17/20										
100	Approval of RFP #11	28 days	Tue 6/9/20	Fri 7/17/20										
104	Football Alternates	124 days?	Tue 6/23/20	Tue 3/16/21										
101	RFP #17 - Electric Water Coolers	17 days	Fri 6/26/20	Tue 7/21/20										
103	Pricing of RFP #17	12 days	Fri 6/26/20	Tue 7/14/20										
102	Approval of RFP #17	5 days	Wed 7/15/20	Tue 7/21/20										
1	Project Milestones	834 days	Mon 6/25/18	Fri 10/8/21										
2	Construction Milestones	834 days	Mon 6/25/18	Fri 10/8/21										
282	Procurement	362 days	Mon 10/21/19	Fri 3/26/21										
499	Construction	268 days?	Fri 4/3/20	Wed 9/1/21										
1209	Site General	242 days	Fri 4/3/20	Thu 7/22/21										
1237	NW Plaza	211 days	Mon 5/11/20	Tue 7/6/21										
1224	NE Plaza	275 days	Mon 5/18/20	Thu 6/17/21										
1225	NE Plaza	177 days	Mon 5/18/20	Fri 5/14/21										
1301	B. Barnett Center Addition Base Bid	239 days?	Fri 4/3/20	Mon 7/19/21										
1302	Barnett Center Addition	239 days?	Fri 4/3/20	Mon 7/19/21										
1312	Structure	55 days	Wed 5/20/20	Thu 8/20/20										
1321	Steel Erection Base and 1.4A	12 days	Tue 7/7/20	Fri 7/24/20										
1322	Decking and Detailing - Base and 1.4A	7 days	Tue 7/21/20	Wed 7/29/20										
1323	Erect Stairs - East - Base Bid	3 days	Tue 7/28/20	Thu 7/30/20										
1325	Electrical Sleeves for Slab on Metal Deck	1 day	Thu 7/30/20	Thu 7/30/20										
1326	Mechanical Sleeves for Slab on Metal Deck	1 day	Thu 7/30/20	Thu 7/30/20										
1327	Plumbing Sleeves for Slab on Metal Deck	1 day	Thu 7/30/20	Thu 7/30/20										
1328	Fire Protection Sleeves for Slab on Metal Deck	1 day	Thu 7/30/20	Thu 7/30/20										
1324	Erect Stairs - West - 1.4A	3 days	Fri 7/31/20	Tue 8/4/20										
1329	Slab-on-metal Deck	5 days	Fri 7/31/20	Fri 8/7/20										
1331	Plumbing Rough In Slab on Grade	3 days	Fri 7/31/20	Tue 8/4/20										
1332	Mechanical Rough In Slab on Grade	7 days	Fri 7/31/20	Tue 8/11/20										
1330	Electrical Rough In Slab on Grade	4 days	Tue 8/4/20	Mon 8/10/20										
1333	Slab on Grade - 1.4A	5 days	Thu 8/13/20	Thu 8/20/20										
1334	Enclosure	48 days?	Thu 8/13/20	Thu 10/29/20										
1335	East Elevation	11 days	Thu 8/13/20	Fri 8/28/20										
1336	Framing - Base	4 days	Thu 8/13/20	Tue 8/18/20										
500	A. Football/Grand Stand	232 days	Mon 4/13/20	Wed 7/14/21										
526	Foundations and Structure for Grand Stand	121 days	Mon 4/13/20	Fri 10/30/20										
726	Foundations - Grand Stand - Area B	121 days	Mon 4/13/20	Fri 10/30/20										
535	Structure - Football Grand Stand	73 days	Wed 6/24/20	Thu 10/22/20										
536	Service Level - Level 1	40 days	Wed 6/24/20	Thu 8/27/20										
540	Plumbing Underslab Rough In - Service Level - Level 1	23 days	Wed 6/24/20	Thu 7/30/20										
537	Set Columns and Beams - Service Level - Level 1	4 days	Tue 7/7/20	Mon 7/13/20										
538	Decking and Detailing - Service Level - Level 1	14 days	Tue 7/14/20	Mon 8/3/20										
539	Electrical Underslab Rough In - Service Level - Level 1	5 days	Tue 8/4/20	Tue 8/11/20										
541	Prep for Slab on Grade - Service Level - Level 1	3 days	Thu 8/13/20	Mon 8/17/20										
544	Concourse Level - Level 2	58 days	Tue 7/7/20	Sun 10/11/20										
545	Concourse Level Grid Line F1-F4	30 days	Tue 7/7/20	Mon 8/24/20										
546	Set Beams and Bracing - Concourse Level - Level 2	4 days	Tue 7/7/20	Mon 7/13/20										
547	Decking and Detailing - Concourse Level - Level 2	14 days	Tue 7/14/20	Mon 8/3/20										

ID	Task Name	Duration	Start	Finish	M	M	Half 2, 2020			Half 1, 2021			Half 2, 2021		
							J	S	N	J	M	M	J	S	
551	Plumbing Rough In for SOMD - Concourse Level - Level 2	8 days	Fri 7/17/20	Tue 7/28/20											
548	Mechanical Rough In for SOMD - Concourse Level - Level 2	4 days	Tue 8/4/20	Mon 8/10/20											
549	Electrical Rough in for SOMD - Concourse Level - Level 2	8 days	Tue 8/4/20	Mon 8/17/20											
550	Erect North Tower Stairs	5 days	Tue 8/4/20	Tue 8/11/20											
552	Fire Protection Rough In for SOMD - Concourse Level - Level 2	4 days	Tue 8/4/20	Mon 8/10/20											
554	Reinforcement Slab on Metal Deck - Concourse Level - Level 2	2 days	Tue 8/4/20	Thu 8/6/20											
556	Concourse Level Grid Line F4-F6	30 days	Tue 7/14/20	Fri 8/28/20											
557	Set Beams and Bracing - Concourse Level - Level 2	5 days	Tue 7/14/20	Tue 7/21/20											
558	Decking and Detailing - Concourse Level - Level 2	15 days	Wed 7/22/20	Thu 8/13/20											
559	Mechanical Rough In for SOMD - Concourse Level - Level 2	2 days	Fri 8/14/20	Mon 8/17/20											
560	Electrical Rough in for SOMD - Concourse Level - Level 2	2 days	Fri 8/14/20	Mon 8/17/20											
561	Plumbing Rough In for SOMD - Concourse Level - Level 2	2 days	Fri 8/14/20	Mon 8/17/20											
562	Fire Protection Rough In for SOMD - Concourse Level - Level 2	2 days	Fri 8/14/20	Mon 8/17/20											
564	Reinforcement Slab on Metal Deck - Concourse Level - Level 2	2 days	Fri 8/14/20	Mon 8/17/20											
566	Concourse Level Grid Line F6-F8	25 days	Wed 7/22/20	Sun 8/30/20											
567	Set Beams and Bracing - Concourse Level - Level 2	6 days	Wed 7/22/20	Wed 7/29/20											
568	Decking and Detailing - Concourse Level - Level 2	11 days	Thu 7/30/20	Mon 8/17/20											
587	Loge Level - Level 3	62 days	Tue 7/7/20	Fri 10/16/20											
588	Loge Level Grid Line F2.5 - F4	37 days	Tue 7/7/20	Thu 9/3/20											
589	Set Beams and Bracing - Loge Level - Level 3	4 days	Tue 7/7/20	Mon 7/13/20											
590	Decking and Detailing - Loge Level - Level 3	14 days	Tue 7/14/20	Mon 8/3/20											
591	Mechanical Rough In - SOMD - Loge Level - Level 3	4 days	Tue 8/4/20	Mon 8/10/20											
592	Electrical Rough In - SOMD - Loge Level - Level 3	4 days	Tue 8/4/20	Mon 8/10/20											
593	Plumbing Rough In - SOMD - Loge Level - Level 3	4 days	Tue 8/4/20	Mon 8/10/20											
595	Fire Protection Rough In - SOMD - Loge Level - Level 3	4 days	Tue 8/4/20	Mon 8/10/20											
598	Loge Level Grid Line F4-F6	35 days	Tue 7/14/20	Tue 9/8/20											
599	Set Beams and Bracing - Loge Level - Level 3	5 days	Tue 7/14/20	Tue 7/21/20											
600	Decking and Detailing - Loge Level - Level 3	15 days	Wed 7/22/20	Thu 8/13/20											
601	Mechanical Rough In - SOMD - Loge Level - Level 3	4 days	Fri 8/14/20	Thu 8/20/20											
602	Electrical Rough In - SOMD - Loge Level - Level 3	4 days	Fri 8/14/20	Thu 8/20/20											
603	Plumbing Rough In - SOMD - Loge Level - Level 3	4 days	Fri 8/14/20	Thu 8/20/20											
604	Fire Protection Rough In - SOMD - Loge Level - Level 3	4 days	Fri 8/14/20	Thu 8/20/20											
608	Loge Level Grid Line F6-F8	32 days	Wed 7/22/20	Fri 9/11/20											
609	Set Beams and Bracing - Loge Level - Level 3	6 days	Wed 7/22/20	Wed 7/29/20											
610	Decking and Detailing - Loge Level - Level 3	11 days	Thu 7/30/20	Mon 8/17/20											
628	Suite Level - Level 4	64 days	Tue 7/7/20	Tue 10/20/20											
629	Suite Level Grid Line F2.5-F4	43 days	Tue 7/7/20	Tue 9/15/20											
630	Set Beams and Bracing - Suite Level - Level 4	4 days	Tue 7/7/20	Mon 7/13/20											
632	Decking and Detailing - Suite Level - Level 4	14 days	Tue 7/14/20	Mon 8/3/20											
631	Set Pre-Cast Tubs for Suite Level - Level 4 - Area B	13 days	Mon 7/27/20	Wed 7/29/20											
633	Mechanical Rough In SOMD - Suite Level - Level 4	5 days	Tue 8/4/20	Tue 8/11/20											
634	Electrical Rough In SOMD - Suite Level - Level 4	5 days	Tue 8/4/20	Tue 8/11/20											
635	Plumbing Rough In SOMD - Suite Level - Level 4	5 days	Tue 8/4/20	Tue 8/11/20											
636	Fire Protection Rough In SOMD - Suite Level - Level 4	5 days	Tue 8/4/20	Tue 8/11/20											
640	Suite Level Grid Line F4-F6	41 days	Tue 7/14/20	Fri 9/18/20											

ID	Task Name	Duration	Start	Finish	M	M	Half 2, 2020			Half 1, 2021			Half 2, 2021		
							J	S	N	J	M	M	J	S	
641	Set Beams and Bracing - Suite Level - Level 4	5 days	Tue 7/14/20	Tue 7/21/20											
643	Decking and Detailing - Suite Level - Level 4	15 days	Wed 7/22/20	Thu 8/13/20											
642	Set Pre-Cast Tubs for Suite Level - Level 4 - Area A	3 days	Thu 7/30/20	Mon 8/3/20											
644	Mechanical Rough In SOMD - Suite Level - Level 4	5 days	Fri 8/14/20	Fri 8/21/20											
645	Electrical Rough In SOMD - Suite Level - Level 4	5 days	Fri 8/14/20	Fri 8/21/20											
646	Plumbing Rough In SOMD - Suite Level - Level 4	5 days	Fri 8/14/20	Fri 8/21/20											
647	Fire Protection Rough In SOMD - Suite Level - Level 4	5 days	Fri 8/14/20	Fri 8/21/20											
651	Suite Level Grid Line F6-F8	38 days	Wed 7/22/20	Tue 9/22/20											
652	Set Beams and Bracing - Suite Level - Level 4	6 days	Wed 7/22/20	Wed 7/29/20											
653	Set Pre-Cast Tubs for Suite Level - Level 4 - Area A	3 days	Thu 7/30/20	Mon 8/3/20											
654	Decking and Detailing - Suite Level - Level 4	11 days	Thu 7/30/20	Mon 8/17/20											
673	Press Level - Level 5	66 days	Tue 7/7/20	Thu 10/22/20											
674	Press Level Grid Line F2.5-F4	49 days	Tue 7/7/20	Fri 9/25/20											
675	Set Beams and Bracing - Press Level - Level 5	4 days	Tue 7/7/20	Mon 7/13/20											
676	Decking and Detailing - Press Level - Level 5	14 days	Tue 7/14/20	Mon 8/3/20											
677	Mechanical Rough In SOMD - Press Level - Level 5	5 days	Tue 8/4/20	Tue 8/11/20											
678	Electrical Rough In SOMD - Press Level - Level 5	5 days	Tue 8/4/20	Tue 8/11/20											
679	Plumbing Rough In SOMD - Press Level - Level 5	5 days	Tue 8/4/20	Tue 8/11/20											
680	Fire Protection Rough In - Press Level - Level 5	5 days	Tue 8/4/20	Tue 8/11/20											
684	Press Level Grid Line F4-F6	47 days	Tue 7/14/20	Tue 9/29/20											
685	Set Beams and Bracing - Press Level - Level 5	5 days	Tue 7/14/20	Tue 7/21/20											
686	Decking and Detailing - Press Level - Level 5	15 days	Wed 7/22/20	Thu 8/13/20											
687	Mechanical Rough In SOMD - Press Level - Level 5	5 days	Fri 8/14/20	Fri 8/21/20											
688	Electrical Rough In SOMD - Press Level - Level 5	5 days	Fri 8/14/20	Fri 8/21/20											
689	Plumbing Rough In SOMD - Press Level - Level 5	5 days	Fri 8/14/20	Fri 8/21/20											
690	Fire Protection Rough In - Press Level - Level 5	5 days	Fri 8/14/20	Fri 8/21/20											
694	Press Level Grid Line F6-F8	44 days	Wed 7/22/20	Thu 10/1/20											
695	Set Beams and Bracing - Press Level - Level 5	6 days	Wed 7/22/20	Wed 7/29/20											
696	Decking and Detailing - Press Level - Level 5	11 days	Thu 7/30/20	Mon 8/17/20											
720	Roof Level - Level 6 - Area B	17 days	Thu 7/30/20	Wed 8/26/20											
721	Set Joists and Bracing - Roof Level - Level 6	10 days	Thu 7/30/20	Fri 8/14/20											
722	Decking and Detailing - Roof Level - Level 6	14 days	Thu 7/30/20	Fri 8/21/20											
759	Temporary Hoist/Ticket Booth Construction	172 days	Wed 6/24/20	Mon 6/14/21											
788	Temporary Dock Structure	5 days	Wed 7/22/20	Tue 7/28/20											
787	Erection of Hoist Floors 1-3	2 days	Mon 8/3/20	Tue 8/4/20											
784	Erection of Hoist Floors 4-6	2 days	Thu 8/6/20	Fri 8/7/20											
786	Temporary Infill Floors 1-3	3 days	Thu 8/6/20	Mon 8/10/20											
789	Electrical Hook Up/Temp Power to Temporary Hoist	3 days	Thu 8/6/20	Mon 8/10/20											
785	Temporary Infill Floors 4-6	3 days	Tue 8/11/20	Fri 8/14/20											
790	Testing of Temporary Hoist	2 days	Tue 8/11/20	Thu 8/13/20											
791	Sign off on Temporary Hoist	1 day	Fri 8/14/20	Fri 8/14/20											
780	Construction Use of Temporary Hoist	85 days	Mon 8/17/20	Tue 3/2/21											
501	South Berm/Visitor Seating	171 days	Wed 7/22/20	Fri 7/9/21											
1429	Softball Stadium/Concessions	257 days	Wed 4/22/20	Wed 9/1/21											
1430	Softball Stadium	137 days	Thu 4/30/20	Tue 1/12/21											
1431	Foundations - Softball	128 days	Wed 4/22/20	Mon 11/23/20											
1435	Berm PreLoad Duration - 12 Weeks	56 days	Mon 6/1/20	Tue 8/18/20											
1449	Softball Concessions	205 days	Wed 4/22/20	Wed 6/9/21											



McCownGordon Quest NSU Sports Complex, a Joint Venture, LLC.
850 Main Street
Kansas City, Missouri 64105
United States

Printed on Mon Jul 13, 2020 at 10:22 am CDT

Job #: 1-07-0868 NSU - Regional Sports Complex
321 17th Ave SE
Aberdeen South Dakota. 57401

NSU Regional Sports Complex Prime Contract

Prime Contract Change Orders

#	Revision	Title	Status	Date Initiated	Due Date	Review Date	Designated Reviewer	CORs	PCOs	Amount
007	0	RFP # 1R1, 9, 10, 13 14	Approved	06/22/20		06/25/20	Unassigned	COR #007	PCO #024 PCO #023 PCO #022 PCO #020 PCO #019	\$38,103.54
006	0	RFP #6, #8, #12	Approved	06/04/20		06/12/20	Unassigned	COR #006	PCO #021 PCO #016 PCO #015	\$98,188.94
005	0	RFP #2/#5 - Abandoned Utility	Approved	05/07/20		05/19/20	Unassigned	COR #005	PCO #011 PCO #009	\$123,116.68
004	0	Alternate 5.2A and 5.3A Storm Sewer Systems	Approved	03/16/20		03/16/20	Unassigned	COR #004	PCO #008 PCO #007	\$177,781.00
003	0	Barnett Center Alternates	Approved	03/16/20		03/16/20	Unassigned	COR #003	PCO #006 PCO #005 PCO #004 PCO #003	\$2,899,951.00
002	0	Alternate 1.4A - West Addition	Approved	03/06/20		03/06/20	Unassigned	COR #002	PCO #002	\$898,186.00
001	0	Owner Change Order #1	Approved	02/25/20		03/06/20	Unassigned	COR #001	PCO #001	\$700,000.00
Total:										\$4,935,327.16



McCownGordon Quest NSU Sports Complex, a Joint Venture, LLC.
 850 Main Street
 Kansas City, Missouri 64105
 United States

Printed on Mon Jul 13, 2020 at 10:22 am CDT

Job #: 1-07-0868 NSU - Regional Sports Complex
 321 17th Ave SE
 Aberdeen South Dakota. 57401

NSU Regional Sports Complex Prime Contract

Potential Change Orders

#	Revision	Title	Status	Date Initiated	Change Reason	COR	PCCO	Change Event	Change Event Type	Schedule Impact	Amount
025	0	RFP #11 Aluminum Handrail in lieu of Steel	Pending - In Review	06/15/20	ASI / PR / Etc.			CE #057	Owner Change	0 days	\$32,404.48
010	0	RFP #3 Revised Scoreboard design	Pending - In Review	04/20/20	ASI / PR / Etc.			CE #028	Owner Change		(\$84,513.22)
Total:										0 days	(\$52,108.74)

Change Events

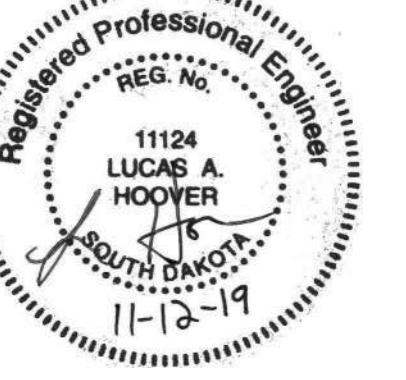
Status Pending

#	Title	Scope	Type	Reason	Status	Origin	ROM	Prime Totals	Commitment Totals	RFQs	Commitment COs	Prime PCOs
072	RFP#18 Additional Lockers	TBD	TBD	Asi pr etc.	Pending		\$0.00	\$0.00	\$0.00			
070	RFP#17 Electric Water Cooler	Out of Scope	Owner Change	Asi pr etc.	Pending		\$0.00	\$0.00	\$0.00			
069	RFP#16 Softball Underground Storm Sewer	Out of Scope	Owner Change	Asi pr etc.	Pending		\$0.00	\$0.00	\$0.00			
057	RFP#11 Guardrail Material Change	Out of Scope	Owner Change	Asi pr etc.	Pending		\$29,906.00	\$32,404.48	\$0.00			PCO#025
Report Grand Totals							\$29,906.00	\$32,404.48	\$0.00			

No.	Description		Priority			Approval Date	Notes
			1	2	3		
Alternates to base bid documents							
ALT 1.1-A	Barnett Center first floor SOG & MEP	Add	\$168,200				Accepted in OCO No. 03
ALT 1.1-B	Barnett Center First Floor build out	Add	\$1,123,217				Accepted in OCO No. 03
ALT 1.3	Barnett Center Second floor build out	Add	\$1,097,522				Accepted in OCO No. 03
ALT 1.4-A	Barnett Center Addition Core and Shell	Add	\$898,186				Accepted in OCO No. 02
ALT 1.4-B	Barnett Center Interior Build Out	Add	\$511,012				Accepted in OCO No. 03
Alt 5.2A	West Parking Lot Retention Basin	Add	\$150,764				Accepted in OCO No. 04
ALT 5.3A	Temporary Storm Drainage System	Add	\$27,017				Accepted in OCO No. 04
ALT 4.1d	Lighting Pole base Sleeves	Add	\$51,423			7/15/2020	Accepted in OCO No. 08
Total Alternates Approved			\$4,027,341	\$0	\$0		
Date Needed For Approval							
ALT 2.1A	Football Loge Restrooms	Add	\$335,067			8/15/2020	Pricing is verified through 8/1/20. MEP Systems increased in Cost.
ALT 2.1B	Football Loge Seats	Add	\$99,288			8/16/2020	Pricing is verified through 8/1/20. Seats have increased in Cost.
ALT 2.2	Upper Football grandstand seating capacity	Add	\$457,184			8/1/2020	Pricing is based on approval end of July, 20 weeks for fabrication and production would have the Crane remob around January - February for install time. March - July will probably be to late as site work paving and fencing will be installed. Pricing is veried through August 1, 2020
ALT 2.3	Football Party Deck Walls & Roofs	Add			\$158,479	8/1/2020	Pricing is verified through 11/1/20
ALT 2.4	Football Stadium Passenger Elevator	Add	\$152,728			8/1/2020	Pricing is good through 8/1/20. This is the last date as the elevators fabrication is set to begin end of August
ALT 2.8	Barnett Center Walkway Bridge	Add			\$205,000	11/1/2020	Pricing updated based on shop drawing sketch. Coop finalizing updated drawing
ALT 2.9	Triax Cable	Add			\$32,730	TBD/NA	\$32,730 In kind Donation and to be handled outside of the construction budget. Pricing not verified
ALT 4.1a	Football Sports Lighting	Add	\$494,059			11/1/2020	Misc electrical from 4.1c is required to be added for a complete system. The 35,667 is required to complete the lighting package and 8,711 is added cost from Musco Lighting. This is a total lighting package with wiring. Pricing is verified through 8/1/20
ALT 4.1b	Entertainment Package to Sports Lighting	Add			\$13,935	11/1/2020	Pricing is verified through 8/1/20
ALT 4.1C	Football Sports Lighting		\$0				Included in 4.1a for total lighting package
ALT 4.3	Football Scoreboard size increase- Removed. Owner Item	Deduct					Included in RFP #3 not on Alternate list
ALT 5.1	West Sidewalk	Add	\$110,402			3/1/2021	Pricing is verified through 8/1/20
ALT 5.2B	West parking and Drive lane	Add		\$134,723		9/1/2020	Pricing is verified through 8/1/20
ALT 5.3B	Softball Parking Lot	Add		\$153,885		9/1/2020	Pricing is verified through 8/1/20
ALT 5.3C	Storm Retention System	Add	\$139,836			8/1/2020	Pricing is verified through 8/1/20
ALT 5.3D	Drive Lane	Add	\$129,463			9/1/2020	Pricing is verified through 8/1/20
ALT 5.4	Sod in lieu of seed	Add	\$23,861			4/1/2021	Pricing is verified through 8/1/20
ALT 5.5	Provide Trees	Add			\$98,019	4/1/2021	Pricing is verified through 8/1/20
ALT 5.6	Provide Planting beds	Add			\$69,128	4/1/2021	Pricing is verified through 8/1/20
ALT 5.7	Curved Seat Walls	Add	\$122,239			4/1/2021	Confirming Reprice
ALT 5.8	Gateway Feature	Add			\$79,283	10/1/2020	Confirming Reprice
ALT 5.9	Football Donor Recognition	Add			\$41,296	10/1/2020	Confirming Reprice
ALT 5.10	Softball Donor Recognition	Add			\$34,380	10/1/2020	Confirming Reprice
ALT 5.11	Sports Field Specialty Softball Field Fence- per Addendum 7	Add			\$131,961	10/1/2020	
Total Phase 2 Alternates			\$1,606,943	\$745,792	\$864,211		
Grand Total of Pending Alternates					\$3,216,946		
Total of Alternates by Priority			\$5,634,284	\$745,792	\$864,211		
Grand Total of All Alternates						\$7,244,287	

Rejected Alternates

ALT 1.7A	Temp Control Alternates	Add	\$7,500
ALT 1.7B	Temp Control Alternates	Dedu	(\$3,500)
ALT 1.7C	Temp Control Alternates	Add	\$1,000
ALT 1.7D	Temp Control Alternates	Dedu	(\$5,000)
ALT 1.7E	Temp Control Alternates	Dedu	(\$900)



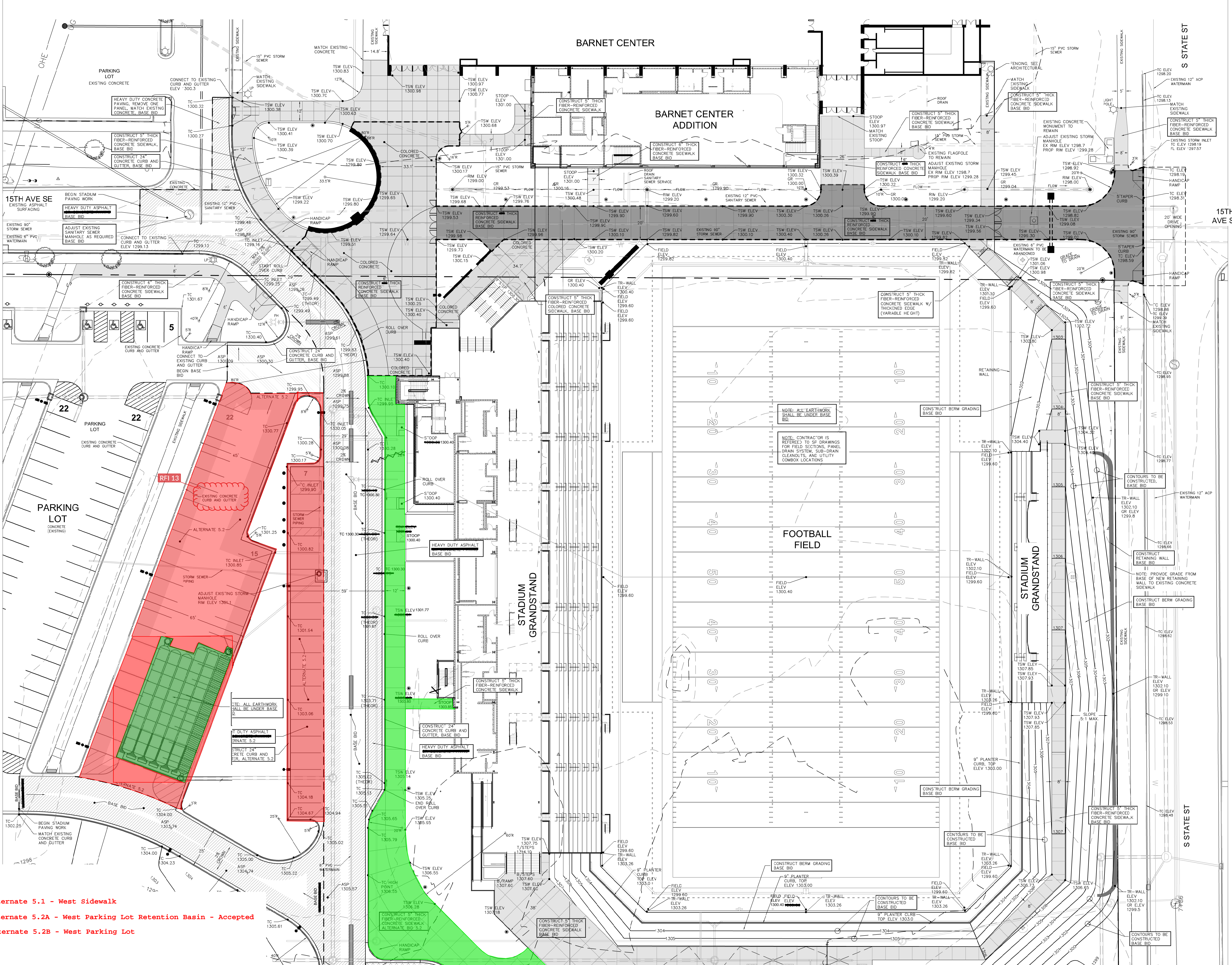
ISSUE:
04.15.2020 FOR CONSTRUCTION

REVISION SCHEDULE:

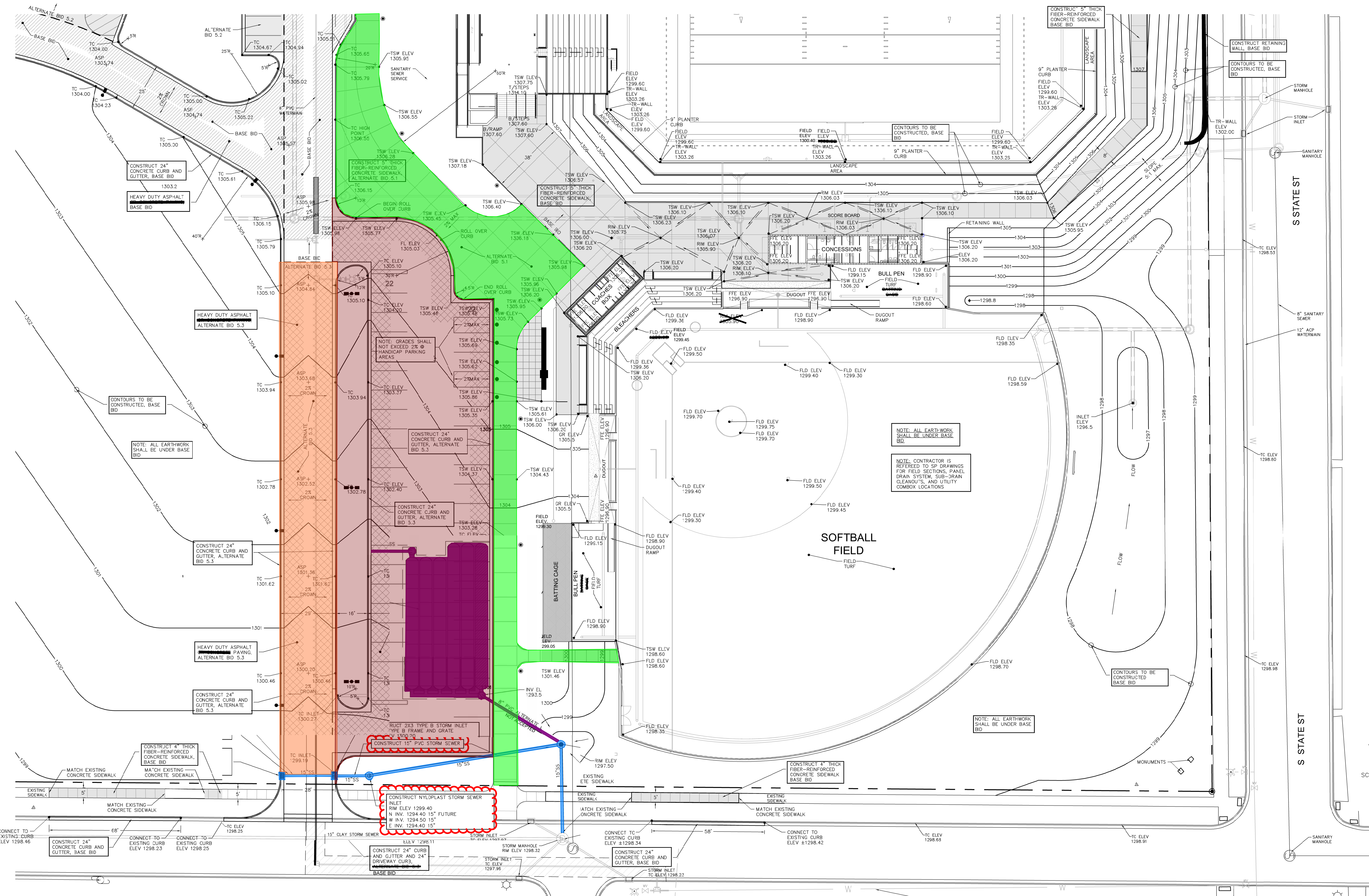
REV. #	REV. DSC.	REV. DATE
1	ADDENDUM #4	11-27-19
2	ADDENDUM #6	12-6-19

PROJECT:
REGIONAL SPORTS COMPLEX
NORTH-ERN STATE UNIVERSITY
ABERDEEN, SOUTH DAKOTA

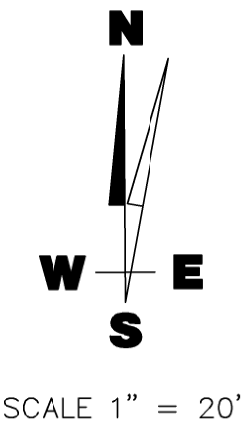
SHEET TITLE:
GRADING/PAVING PLAN (NORTH)



- Alternate 5.1 - West Sidewalk
- Alternate 5.2A - West Parking Lot Retention Basin - Accepted
- Alternate 5.2B - West Parking Lot



- Alternate 5.1 - West Sidewalk
- Alternate 5.2B - West Parking Lot and Drive Lane
- Alternate 5.3A - Temporary Storm Drainage System - Accepted
- Alternate 5.3B - Softball Parking Lot
- Alternate 5.3C - Storm Retention System
- Alternate 5.3D - Drive Lane



Contingency Tracker



PROJECT NAME AND JOB #
NSU Regional Sports Complex
7.868

Amount Included in Final PFP: \$1,262,038

Amount from Previous Month: (\$50,133)

Current Amount: \$1,211,905

Summary of Changes:

Item	Date	Forecasted Contingency	(+/-)	Description
	9/30/2019	\$1,262,038	\$0	GMP
1	11/30/2019	\$1,148,270	(\$113,768)	OCO #1 VE updates; 3% of total OCO #1
2	2/28/2020	\$1,175,216	\$26,946	OCO #2 ALT 1.4A Barnett Center West Addition; 3% of total cost OCO #2
3	2/28/2020	\$1,262,216	\$87,000	OCO #3 Barnett Center Finishes; 3% of total cost OCO #03
4	2/28/2020 - April 2020	\$1,267,438	\$5,222	OCO #4 ALT 5.2A - Storm Sewer Indirect water dispursement; 3% of total cost OCO #4
5	Approved (Football) Lien CO #1	\$1,264,904	(\$2,534)	Lien Site Clean Up for CNC due to Rain - (Football) Lien Change Order #1
6	Approved (Football) Waldner CO #1	\$1,249,904	(\$15,000)	Mud Matt for VSC prior to rain event CO#1
7	Approved Waldner CO#2	\$1,222,540	(\$27,364)	Waldner Bond CO #2
8	Approved (Football) Lien CO #3	\$1,218,705	(\$3,835)	Install gravel for the crane to come into the site.
9	Pending	\$1,211,905	(\$6,800)	Extra Piers due to Stair design
				Ground Improvements gravel; Football Area B due to Geotek/ Helitech Recommendations -
10	Pending	\$1,211,905	\$0	Confirm with David
11	Pending	\$1,211,905	\$0	Epoxy flooring/ Traffic Coating - Pending
12	Pending	\$1,211,905	\$0	Polished Concrete Finish - Pending